



LET'S LEARN

How to choose the right tool for leather edge dyeing,
when using hand applicators.



Hand Applicators



What is your goal when you are choosing your applicators?

Goals

Something for you



Which type of products are you going to paint?



What is the quality that you want to achieve on your leather edge?



How long can be the painting process during your production time?



COMMONS TOOLS

from which you can choose your.

Commons Tools

Explained



SPONGE

Probably the most popular tool among the leather crafters, because of its easy availability and low cost. Usually should be selected according to its consistency, in order to have a moderate absorption and gradual release of the paint.



ROD

It can be of different materials, depending on what you have available. It allow high accuracy on very tight corners or hard to reach. It's not very advised when you are in front of large items or very large surface areas.



ROLLER DYE PEN

It is one of the most used tools for painting leather edges by hand. It allows to apply the leather edge paint on all types of leather items, in a quickly a precise way.



ROLLER DYE TOOL

This manual tool fairly well simulates the type of processing of an automatic machine, allowing application also fairly accurate over a very large surface, in a quick way.

Commons Tools

Pros and Cons



	SPONGE	ROD	ROLLER DYE PEN	ROLLER DYE TOOL
PROS	<ul style="list-style-type: none"> - easy to find; - moldable depending on your needs; - very low cost; 	<ul style="list-style-type: none"> - different objects may be adapted; - very accurate application for particular items; - easy to clean; 	<ul style="list-style-type: none"> - very practical for application on any kind of items; - quick in use even on larger surfaces; - allows good precision even on difficult shapes; - easy to clean; 	<ul style="list-style-type: none"> - doesn't need continuous pick up of the paint; - very practical for application on the surface of both small and extended; - accessories available for processing;
CONS	<ul style="list-style-type: none"> - not usable for more than one session; - difficult to use in case of very tight curves and corners; - not practical for very long processes; - requires experience and manual skills; 	<ul style="list-style-type: none"> - not practical for use on larger surfaces; - not suitable for very long processes; - processing is very long; 	<ul style="list-style-type: none"> - it requires good manual ability for use; 	<ul style="list-style-type: none"> - does not permit application on very tight curves; - needs particular attention during the cleaning phase;

Commons Tools

Pros and Cons



	SPONGE	ROD	ROLLER DYE PEN	ROLLER DYE TOOL
PROS	<ul style="list-style-type: none">- easy to find;- moldable depending on your needs;- very low cost;	<ul style="list-style-type: none">- different objects may be adapted;- very accurate application for particular items;- easy to clean;	<ul style="list-style-type: none">- very practical for application on any kind of items;- quick in use even on larger surfaces;- allows good precision even on difficult shapes;- easy to clean;	<ul style="list-style-type: none">- doesn't need continuous pick up of the paint;- very practical for application on the surface of both small and extended;- accessories available for processing;
CONS	<ul style="list-style-type: none">- not usable for more than one session;- difficult to use in case of very tight curves and corners;- not practical for very long processes;- requires experience and manual skills;	<ul style="list-style-type: none">- not practical for use on larger surfaces;- not suitable for very long processes;- processing is very long;	<ul style="list-style-type: none">- it requires good manual ability for use;	<ul style="list-style-type: none">- does not permit application on very tight curves;- needs particular attention during the cleaning phase;

Commons Tools

Pros and Cons



	SPONGE	ROD	ROLLER DYE PEN	ROLLER DYE TOOL
PROS	<ul style="list-style-type: none">- easy to find;- moldable depending on your needs;- very low cost;	<ul style="list-style-type: none">- different objects may be adapted;- very accurate application for particular items;- easy to clean;	<ul style="list-style-type: none">- very practical for application on any kind of items;- quick in use even on larger surfaces;- allows good precision even on difficult shapes;- easy to clean;	<ul style="list-style-type: none">- doesn't need continuous pick up of the paint;- very practical for application on the surface of both small and extended;- accessories available for processing;
CONS	<ul style="list-style-type: none">- not usable for more than one session;- difficult to use in case of very tight curves and corners;- not practical for very long processes;- requires experience and manual skills;	<ul style="list-style-type: none">- not practical for use on larger surfaces;- not suitable for very long processes;- processing is very long;	<ul style="list-style-type: none">- it requires good manual ability for use;	<ul style="list-style-type: none">- does not permit application on very tight curves;- needs particular attention during the cleaning phase;

Commons Tools

Pros and Cons



	SPONGE	ROD	ROLLER DYE PEN	ROLLER DYE TOOL
PROS	<ul style="list-style-type: none"> - easy to find; - moldable depending on your needs; - very low cost; 	<ul style="list-style-type: none"> - different objects may be adapted; - very accurate application for particular items; - easy to clean; 	<ul style="list-style-type: none"> - very practical for application on any kind of items; - quick in use even on larger surfaces; - allows good precision even on difficult shapes; - easy to clean; 	<ul style="list-style-type: none"> - doesn't need continuous pick up of the paint; - very practical for application on the surface of both small and extended; - accessories available for processing;
CONS	<ul style="list-style-type: none"> - not usable for more than one session; - difficult to use in case of very tight curves and corners; - not practical for very long processes; - requires experience and manual skills; 	<ul style="list-style-type: none"> - not practical for use on larger surfaces; - not suitable for very long processes; - processing is very long; 	<ul style="list-style-type: none"> - it requires good manual ability for use; 	<ul style="list-style-type: none"> - does not permit application on very tight curves; - needs particular attention during the cleaning phase;



USE AND MAINTENANCE

of the hand applicators for leather edge paint

Use and Maintenance



The SPONGE

Dimensions: 115 x 20 x h.15 mm

Material : High Density PU Foam

Weight : 5 gr.



Use and Maintenance



The ROLLER DYE PEN

Overall Dimensions : 130 mm - diameter 15 mm
Brass Head Length : 18 mm
Weight : 20 gr.

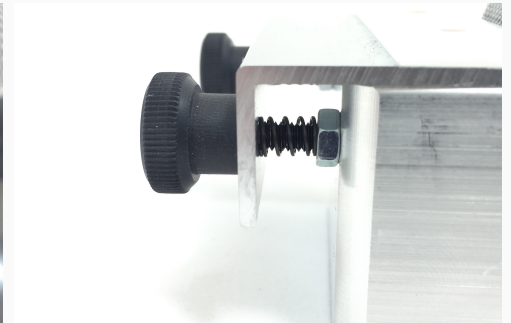
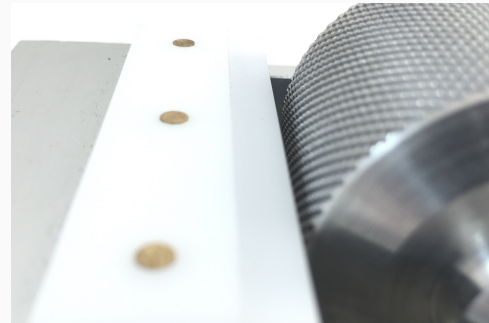


Use and Maintenance



The ROLLER DYE TOOL

Dimensions : 110 x 60 x h.58 mm
Material : Body and Roller in Aluminium
Blade in Plastic
Weight : 360 gr.





ACCESSORIES

and spare parts for hand applicators

Accessories and Spare Parts

For Hand Applicators



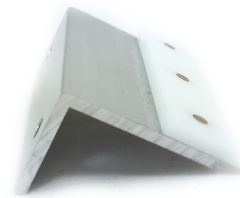
DYE TOOL SUPPORT

Designed to facilitate the use of the roller dye tool during the application on long items (eg. Handles, Belts, etc.) and/or to allow the operator to maintain an upright posture more comfortable, avoiding unnecessary fatigue during extended work phases.



DYE TOOL ROLLER

Spare part for roller dye tool.



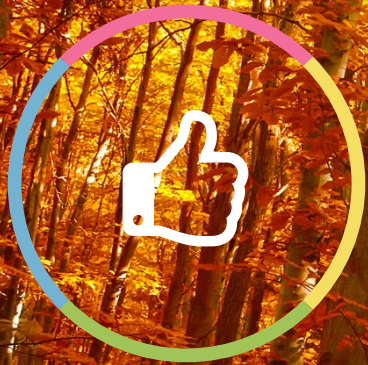
DYE TOOL BLADE

Spare part for roller dye tool.



TOOLS CLEANER

Water-based product which contains a blend of surfactants, which have been incorporated to facilitate the disintegration of GIARDINI leather edge paint once dry.



THANK YOU FOR WATCHING